

Medical Device for Automatic Noninvasive Health Screening Diagnostics
based on the analysis of thermodynamic parameters

realized under commercial names:

Noninvasive Hemogram Analyzer **AMP MODEL19**

Automatic Noninvasive Express Screening Analyzer **ANESA®**
MODEL19

Dispositivo de Ayuda al Diagnóstico y Analizador No Invasivo **DAD-ANI® MODEL19**

(Hereinafter MD ANALYZER)

**GUIDELINE FOR CONNECTING THE MEDICAL DEVICE
ANALYZER WITH BLUETOOTH MODULE.**



2021



CONNECTION THE DEVICE TO A COMPUTER VIA BLUETOOTH

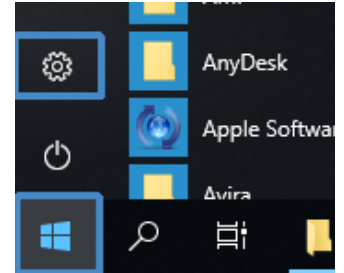
Run Windows on your PC. Install software USPIH (using the link given by the manufacturer).

To turn on the device, please press and hold the "POWER" button at least three seconds, till green LED stop flashing and light continuously.

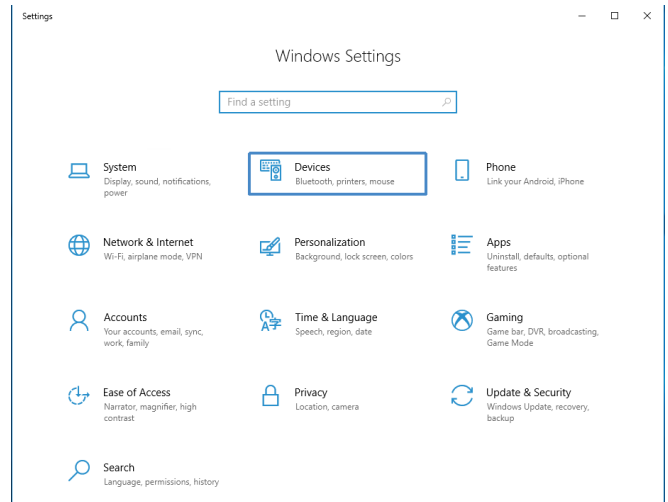


Create the Bluetooth pair between the computer and the MD ANALYZER

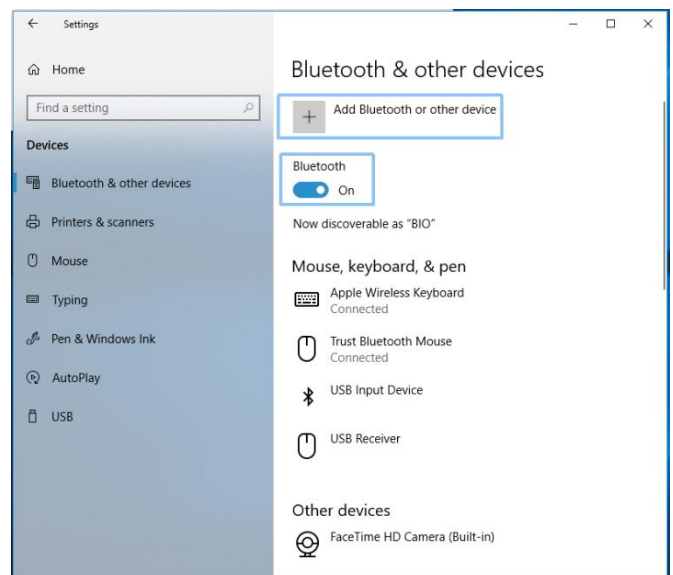
In the main menu of OS Windows, select the "Settings" menu



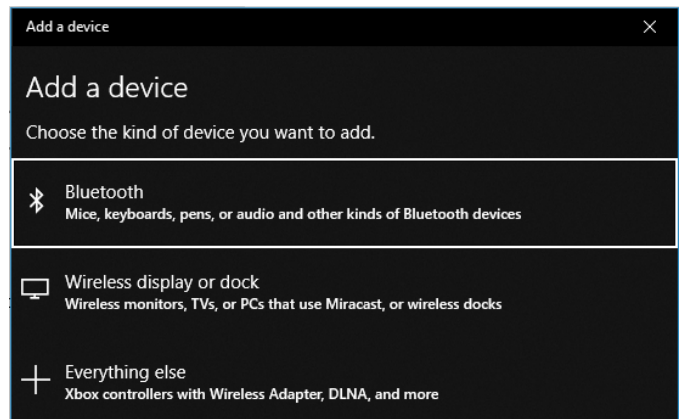
Then, select the menu "Devices"



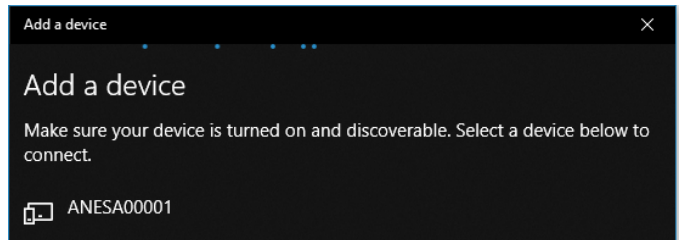
Turn on Bluetooth and press
“+ Add Bluetooth or other device”



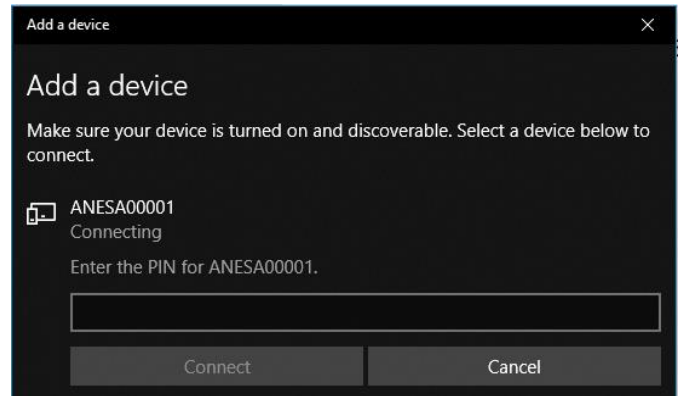
Select menu “Bluetooth”



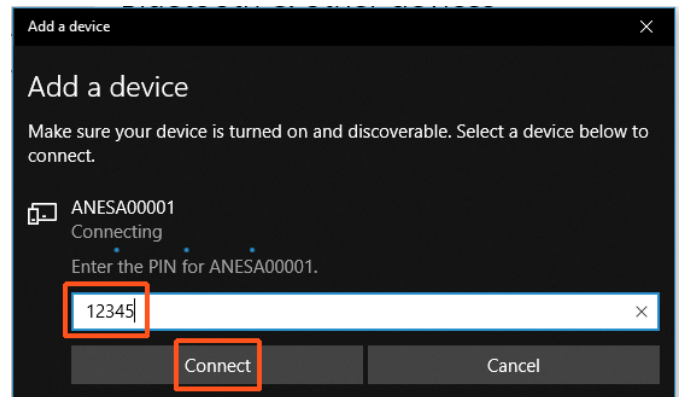
Add the device MD ANALYZER
(the serial number will be visible here)



The window with a request for a password will be displayed

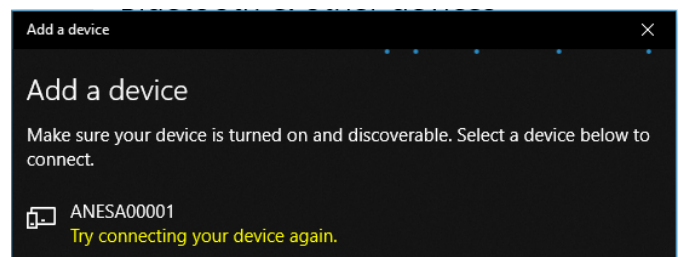


Enter password: **12345** and press
“Connect”

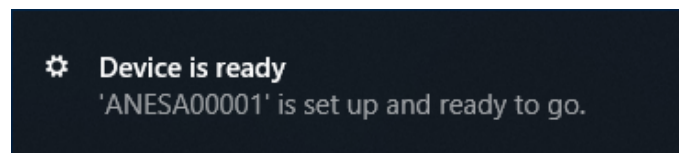


If the password was entered incorrectly or you did not enter it for a long time, the following message will appear:

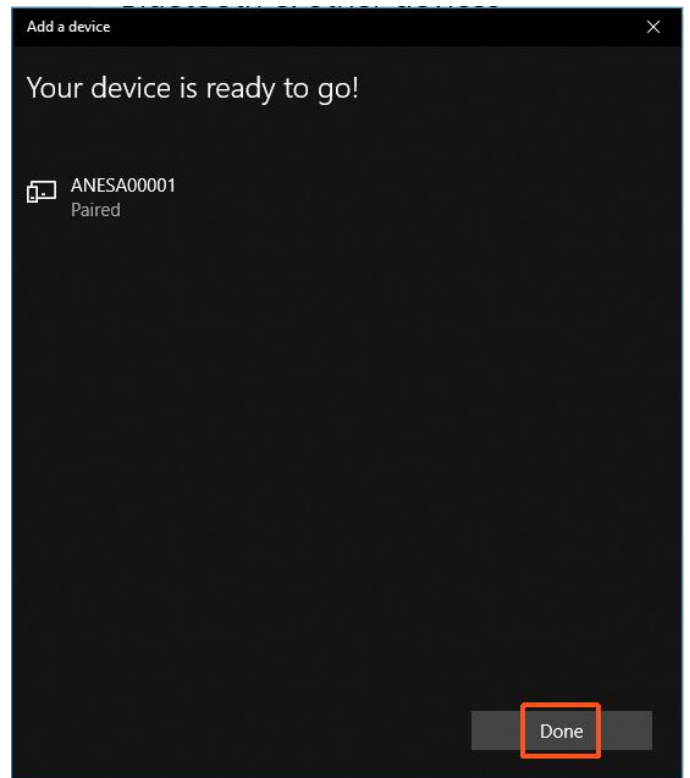
Try to connect your device again.



In the lower right corner of the Windows interface, the message is displayed: "The device is ready"



Click "Done" to continue.

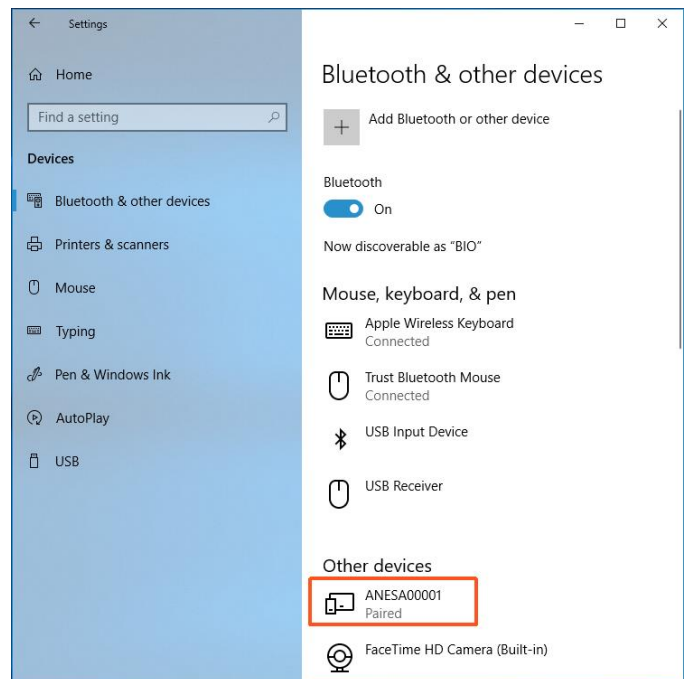


If the pairing of the MD ANALYZER and the computer via the Bluetooth channel is successful, the blue LED (under the sign of Bluetooth) on the front panel of the device will light up.



To check the correct connection of the device to the computer, use the setting menu of OS Windows.

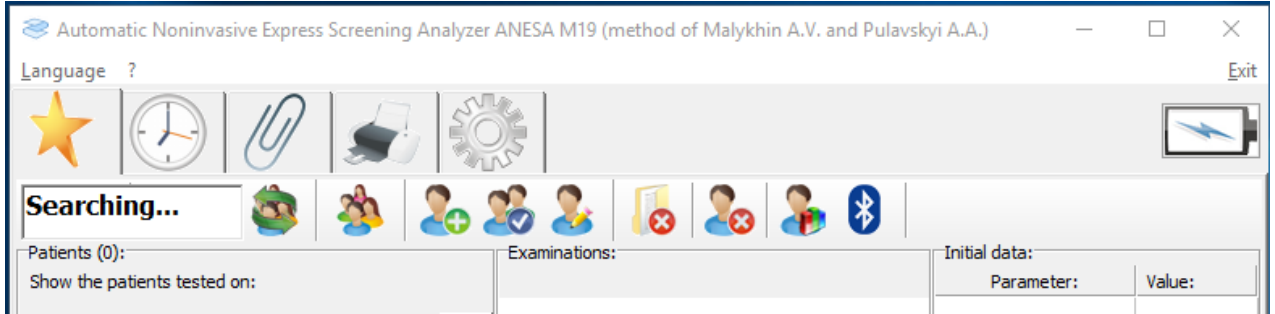
The MD ANALYZER with its serial number will be listed in the appropriate list of Bluetooth devices.



Run software using the icon



When the software USPIH is run, please press the key combination Ctrl +Alt +B and wait till software USPIH finds the device ANALYZER. When connection is successful, the sign of Bluetooth in the software USPIH will be highlighted (blue colour; without blinking). Now, it is possible to test patients.



DOCUMENT HISTORY AND VERSION CONTROL

Version	Version Date	Summary of changes	Author	Related documents
1.0	2021-05-27	Created	Pulavskiy A.	